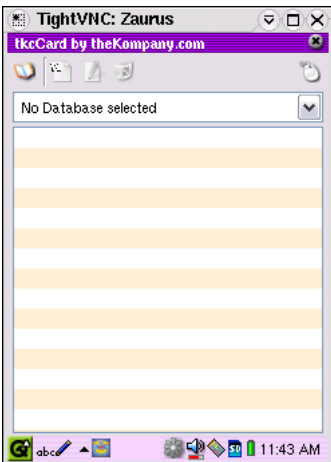


TkcCard

TkcCard is a lightweight, easy to use database application for when you need to store and organize arbitrary data and when tkcRecall is overkill for your requirements, well now there is a solution. With tkcCard you have an application that is similar to something like MobileDB for the Palm OS. You can create and manage virtually any type of data, and with our predefined datatypes, it's even easier.

Following is a tutorial to help you get started with tkcCard. The terms “Card” and “Database” are used interchangeably in the tutorial.

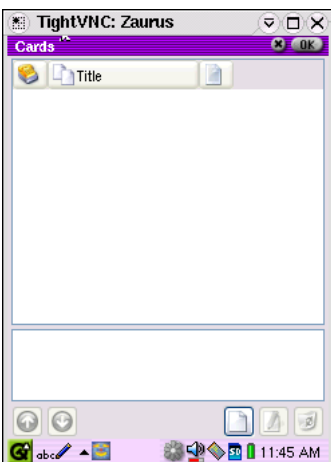
When you first open tkcCard, you'll see the Data View screen:




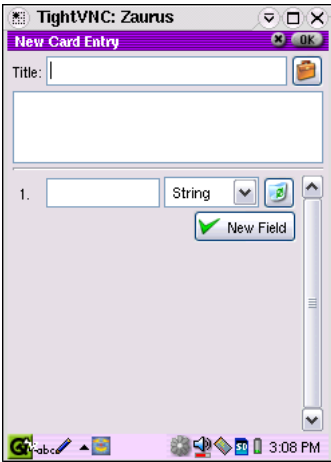
Since you have no databases (Cards) yet, you'll need to create one.


Create New Card (Database):

1. Tap  to go to Database Manager:



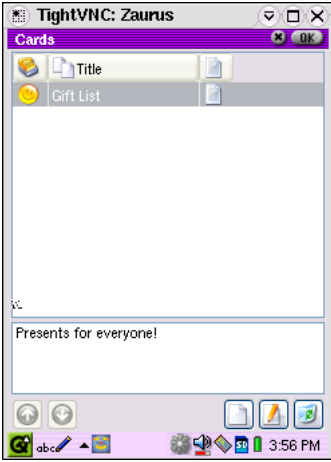
2. Tap  at the bottom to Create New Card:



3. Tap the  icon to the right of the Title box and you can change the icon that appears in front of the database name in the list. For this tutorial we'll name the card "Gift List"
4. In the box below the Title box, you can enter a brief description of your Card.
5. Below the description box, you'll see a box with the number 1 in front of it. This is where you define your fields. Enter "Name" for your first field.
6. To the right of the field name box is the data type for your field. Tap the down arrow next to the box that says "String" This brings up all the data type choices. The first field is called "Name" so we'll leave it as data type "String". (Data type explanation is at the end of this tutorial.)
7. Next tap the "New Field" button. Call the field "Occasion" and pick "List"
8. Create the rest of the fields as shown below:

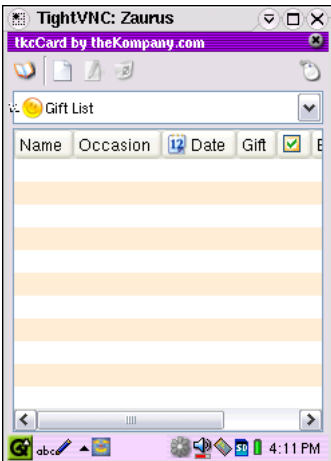


9. Tap OK in the upper right. You'll be back at the Database Manager:




The icons on the bottom allow you to Create , Edit , and Delete  your Cards.

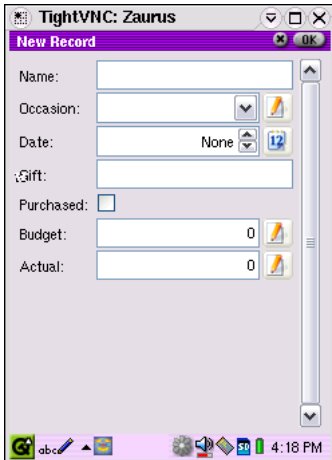
10. Tap OK to return to Data View:



Now you have your Card created with the fields you want. Now you'll want to add some records.

Adding Records:


1. Tap  to create new record:



The screenshot shows the 'New Record' dialog box in the Zaurus application. The dialog has a title bar with 'TightVNC: Zaurus' and 'New Record' with an 'OK' button. The form contains the following fields and controls:

- Name: A text input field.
- Occasion: A dropdown menu with a list icon to its right.
- Date: A date picker showing 'None' and a '12' icon.
- Gift: A text input field.
- Purchased: A checkbox.
- Budget: A text input field with '0' and a list icon.
- Actual: A text input field with '0' and a list icon.

The bottom of the dialog shows a taskbar with icons for 'abc', a mouse cursor, and the time '4:18 PM'.



2. Enter the name of the person the Gift is for, Fred Flintstone
3. For Occasion we picked the "List" data type. Tap the  next to the down arrow to the right of the Occasion box. This brings up a screen where you can add a list of occasions for a drop-down box:

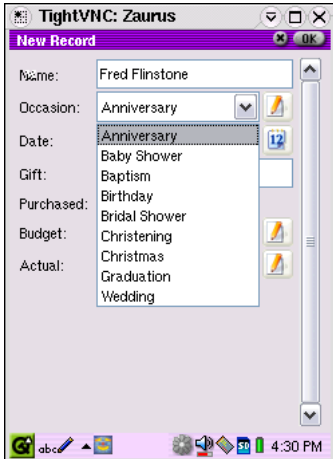


The screenshot shows the 'Edit Occasion' dialog box in the Zaurus application. The dialog has a title bar with 'TightVNC: Zaurus' and 'Edit Occasion' with an 'OK' button. The form contains the following elements:



- A list of occasions: Birthday, Christmas, Anniversary, Baptism, Christening, Wedding, Baby Shower, Bridal Shower, and Graduation. 'Graduation' is selected and highlighted.
- Occasion: A text input field containing 'Graduation'.

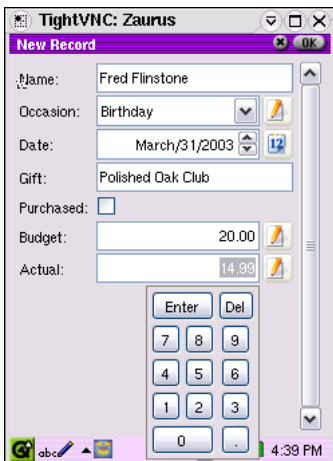
The bottom of the dialog shows a taskbar with icons for 'abc', a mouse cursor, a 'Sort' button, and the time '4:24 PM'.

Tap the  icon at the bottom to add items to your Occasion list. Type the Occasion you want in the list in the box at the bottom, then Tap the  icon again to add another. Repeat until you have all the occasions you might purchase gifts for. Tap OK to return to the record entry. Now when you tap the down arrow next to the occasion box, you'll get a list like this:



Tap the occasion the gift is for. I'll pick birthday for this tutorial.

4. Next is the Date of the occasion. Tap the  icon next to the date box. This pops out a calendar so you can quickly pick a date.
5. Enter the gift you want to purchase.
6. The purchased field has a check box. Once you've purchased the gift you can check the box to indicate you've purchased it
7. Next is the Budget field. This is a "Double" data type. If you tap the  icon, a pop-out number pad is displayed:

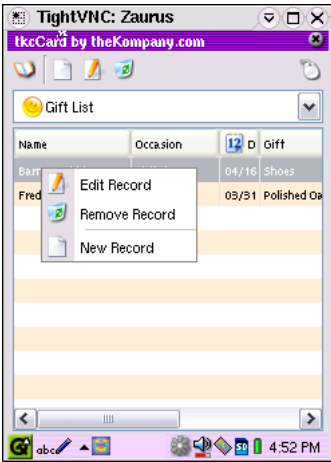


8. Enter the Actual cost of the item. (For after you purchase the item, but I filled it in for the tutorial.
9. When all your fields are filled in, tap OK.
10. Enter another record.

Now we have 2 records in our Card. There is some “Quick Edit” functionality from the data view screen. If you tap on a field of a selected record, you can edit that field from the Data View screen.

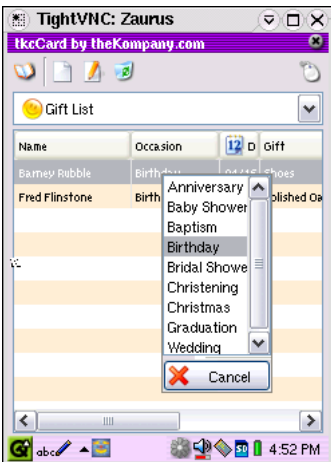
Quick Edit Functions

1. Tap on “Name” field on a selected record (String data type) and a menu with some options pops-out:

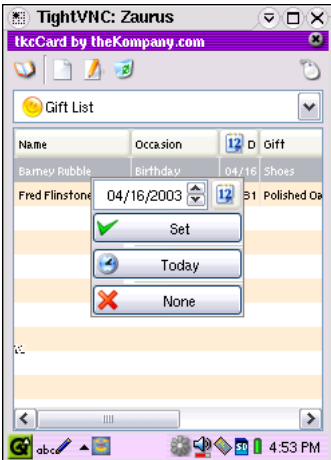


If you tap on the Edit record choice, you will get the full record edit screen.

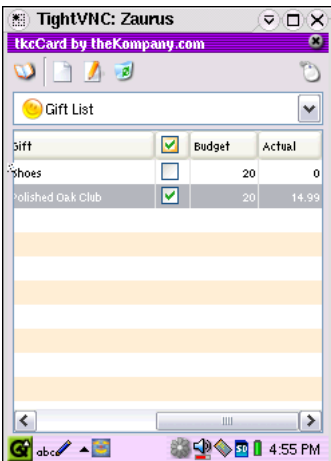
2. Tap on Occasion (List data type) on a selected record and your list of occasions pops-out so you could change that field:



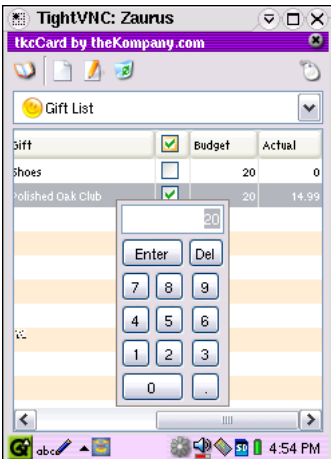
3. Tap on the date field (Date type) of a selected record and the calendar menu pops out so you can change the date to today's date or tap on the 📅 to pop out the calendar:



4. Tap on the Purchased (Bool) field of a selected field and you will see a check in the box (Tap it again to remove the check):








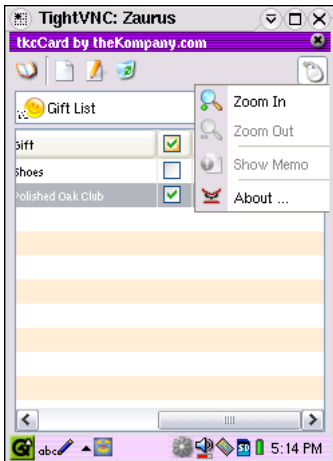
5. Tap on the Budget field (Double type) of a selected field and the number pad pops out so you can change the amount:



7. If you tap on the field headers, you can sort the records in ascending/descending order.

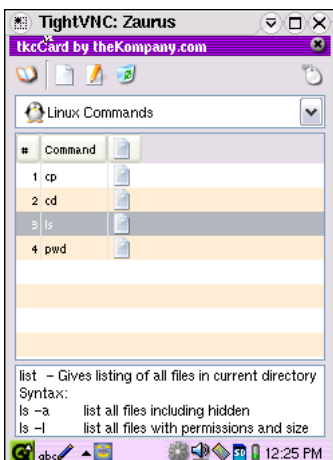
Data View Icons:


1.  This toggles between Database Manager and the Data View.
2.  Create New: Tap this to create new record.
3.  Edit: Tap this to edit selected record
4.  Delete: Tap this to delete selected record
5.  Options: This pops-up a menu with some miscellaneous options:




The Zoom In, Zoom Out options are particularly useful on the C700. I have my view zoomed out all the way, which is why the option is greyed out.

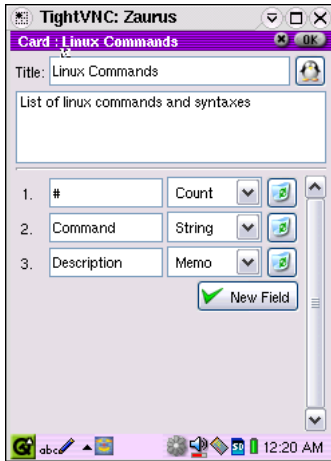
The Show Memo option will show you the first 4 lines of your memo in the bottom of the Data View screen:



Tap the  icon to return to the Database Manager. We'll create one more little database to show a few more data types. This one will be a simple database for Linux commands.

Create Another New Card

1. Tap  to create new card.
2. Add the fields as shown:



Note: The little penguin icon is a Crystal icon that I added.

To add your own icons: Icon size is 16x16. Copy the icon into `/home/QtPalmtop/pics/tkcCard/icons`. Tap OK to return to Database Manager view.

Tap OK again to go to Data View.

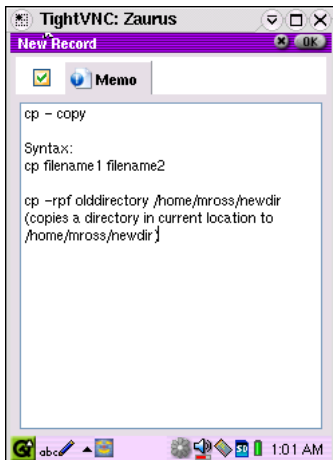
3. Add records. Tap  to create new record:



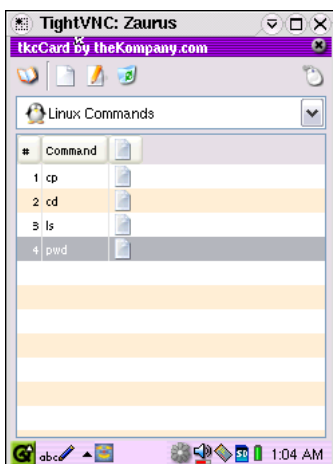
4. The first field, the # field uses the Count data type. If you tap the little up arrow right next to the 0 once, the number 1 will appear (Tap up again to increment by one, etc). In command type cp:



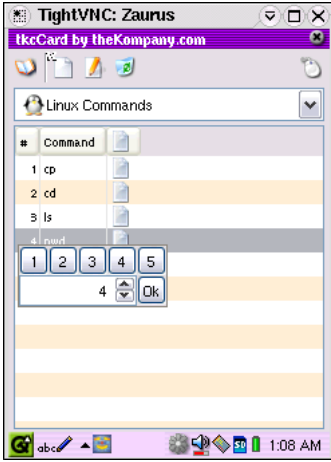
5. Next tap the 2nd tab with the  icon to enter the memo information:




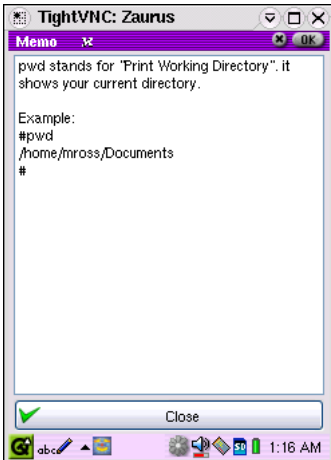
6. Tap OK. Create a few more records. Now your Data View will look similar to this:



7. Tap on the # field on the selected record and a counter will pop up so you can change the number:



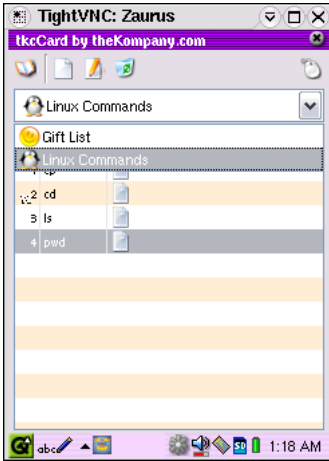
8. Tap on the  icon on the selected field and the memo will be displayed for viewing or editing:



9. Tap Close or OK to return to Data View.


Switching between Cards (databases):

If you want to switch back to the Gift List card, tap the down arrow next to the box at the top that says Linux Commands (or whatever the current Card name is):





Tap Gift List to switch to the Gift List card.

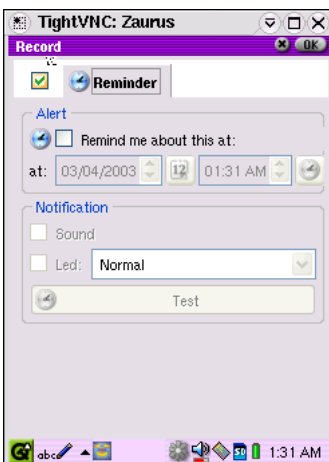
Now we're back at the Gift List card. After looking it over, I've thought of something else I wanted in the Card. Tap the  icon to go to Database Manager so we can add in another field.

Tap the Gift List to select it. Tap the  icon to edit the Gift List card. Scroll down a little then tap "New Field" button. Name it "Alarm" and use "Reminder" as the data type.

Tap OK to return to Database Manager.

Tap OK to go to Data View.

If Gift List isn't the active Card, Tap the down arrow & select it. If you scroll to the right, you'll see a  icon. Tap on the  field in the selected record and the alarm screen displays and you can set an alarm/reminder so you don't forget to buy that present:



Data Type Explanations:

- String:** Character, single line
- Integer:** Whole numbers such as 1, 2, 3, 4, etc.
- Double:** Decimal numbers such as 123.246 or 1.313131 or 12.50
- Date:** Date field
- Time:** Time field
- Date/Time:** Date and Time field (displays date and time of record correction. User can change both)
- Text:** Character, multiple lines (Shows one line in data view, tap the text field on a selected record and you can see the rest of the lines.)
- Memo:** Memo field.
- Bool:** Boolean. This displays a checkbox, which you can check and uncheck by tapping on the Memo tab in the record
- Reminder:** Allows you to set an alarm/reminder
- List:** Allows you to be able to create a drop-down list.
- Counter:** Displays a number and a counter box.
- Image:** Allows you to insert an image into your database (New feature in 2nd release so if you don't have this data type, check your download basket for newer version)

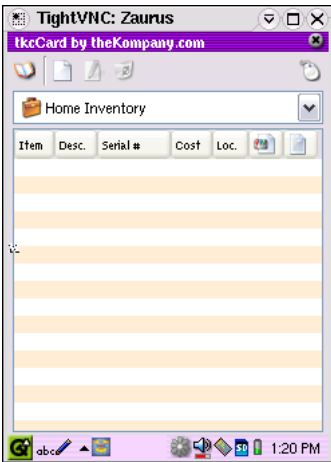
New Feature: Support for Images in your cards. (In 2nd release of tkcCard. Update tkcCard from download basket if you don't have this option)


1. I've made a very simple card to demonstrate the "Image" data type:



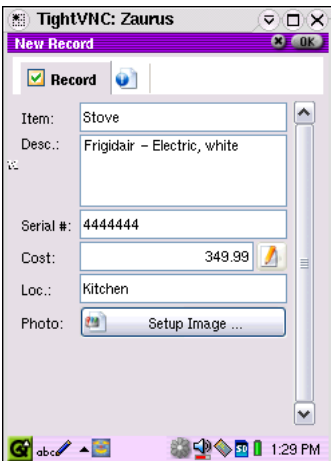
2. Note the Photo field has "Image" as data type.

3. Now I go to data view:



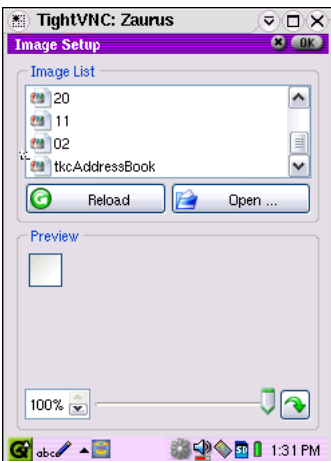
Notice the 2nd to last icon: . This indicates an image field is available.

I'll enter a new record for the card:

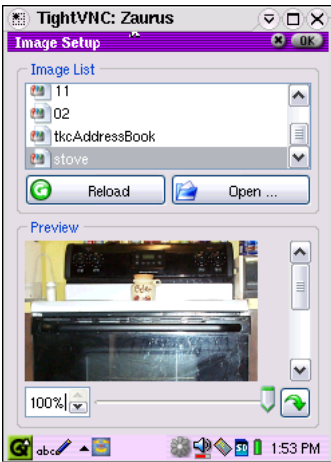


To insert an image:

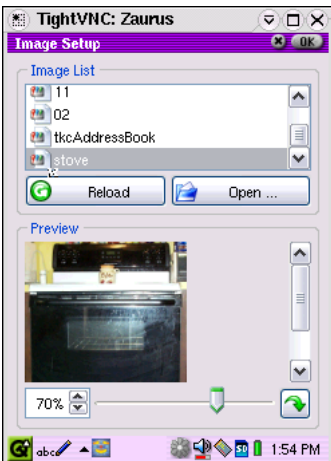
1. Tap on Setup Image button. This screen will appear:



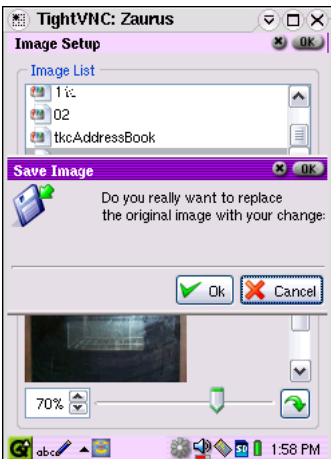
2. If your image isn't in the Image list, tap the Open button, and you can browse to where your image is. My image was a .jpg, which didn't show up in the list, so I picked "All files" and then I could see it in the list. I selected the image I wanted and tapped OK. A preview screen appears:



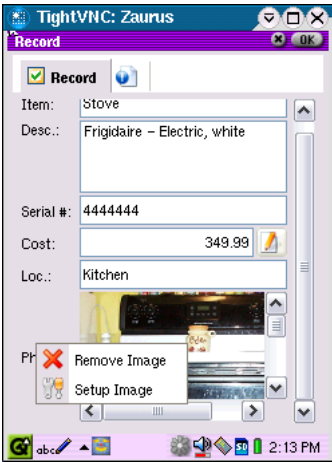
3. I wanted my picture smaller, so I tapped the down arrow next to the 100% and chose 70%. Depending on the size of your picture, you may or may not have to resize it:



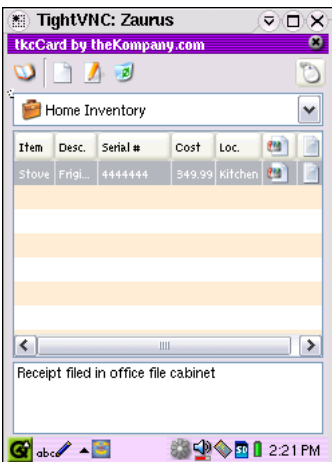
4. Tap OK and a box pops up:




Tap OK (the change is permanent). If you want to change the picture, tap the picture and a menu will pop up that allows you to setup picture or delete picture:



4. Now in the data view we have an entry (note the bottom of the screen shows the contents of the memo field. You can enable this feature by tapping the mouse icon and selecting “Show memo”):



5. Tap on the  icon next to the item to view the image:



As you can see, I didn't really need to re-size the picture to 70%, as there's plenty of room to view it full size.

6. Tap OK to return to the data view.

NOTES: Changing the picture and saying OK saves over the original. Also, you can't remove the image file, as the image isn't embedded into tkcCard.

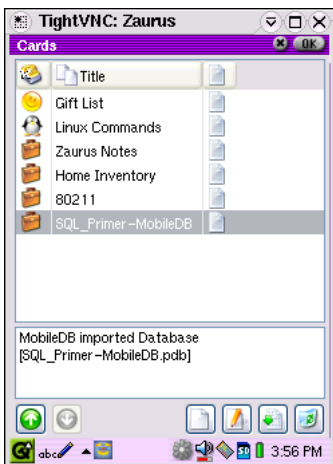
New Feature in tkcCard –32

You can now import databases from MobileDB, a popular Palm DB format. You can find over a thousand free databases to import at www.mobiledb.com

To Import a MobileDB file:

There are 2 ways to access the import function.

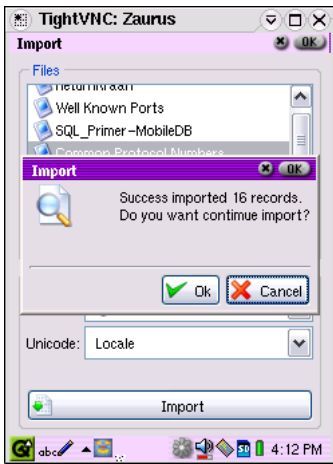
1. From the Database Manager view, tap the  icon at the bottom:



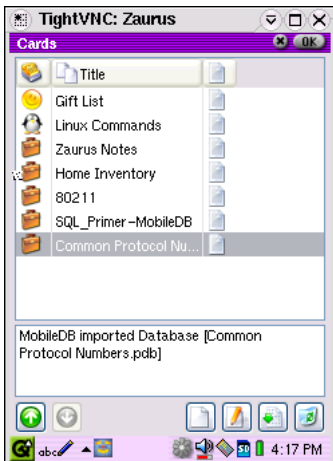
2. A screen will pop-up allowing you to choose the file to import



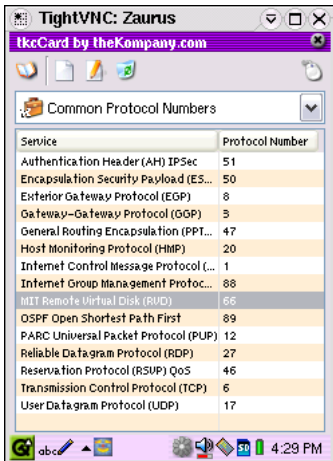
3. If you don't see the db you want to import on the list, tap Open and browse to where you put the .pdb file. Tap on the db you want to import, then tap on the Import button at the bottom. I've selected one called Common Protocol Numbers. Then tap Import and another little window will pop up:



4. Tap OK and you'll return to the Import screen. Tap OK again and you'll go back to Database Manager view. The imported database will now be in the list:

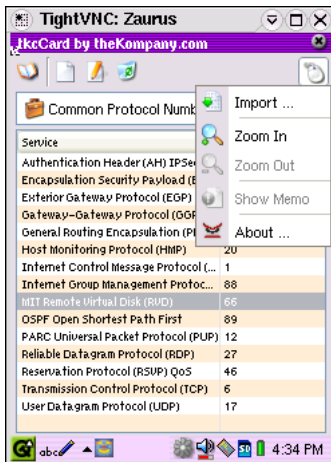


5. Tap OK again to return to Data View screen. The open database you see there is the last one you had open. Tap the down arrow to the right of the top box, and your imported database will now be in the list. Tap the db you want to view, in this case it's the Common Protocols one:



The second way to access the import function is to tap the  icon.

The Import option is the top item in the menu:



Follow the same procedure for importing as shown above.

Note: Once you import a MobileDB to tkcCard, you can delete the original. TkCard will create a new db in its own format in /home/root/Applications/tkcCard. Also after importing a few different db's I noticed that all the fields in the imported db's are "String" data types. Sometimes you may want to go in and edit the data type. I had one that had IP Port numbers and instead of the records showing in order 1, 2, 3... it went 1, 10, 100, 11.. so I went and changed the data type on that field from "String" to "Integer"


New in tkcCard –34:

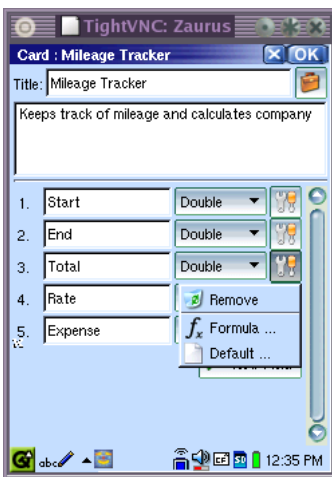
The Card Editor dialog has been redesigned. This is where you add/edit fields.

New Data Types:

MultiList: Allows you to set a list and pick more than one item from the list.

Increment: Choosing this field will automatically increment by 1 the number displayed as you add records.

There is a new icon to the right of the data type: . Tap this icon and a menu pops up:



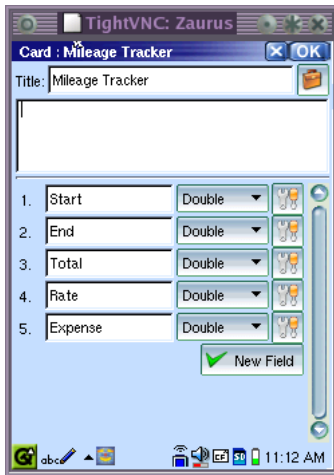
Tap Remove to remove a field.


Tap Formula to add a formula to the field.

Tap Default to set a default value to the field.


Field Calculations/Formulas:

Now you can set a field to perform a calculation. I made a simple Mileage Expense Tracker:

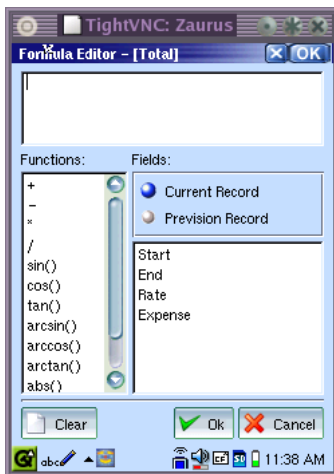


After setting all the date types to “Double”, I set the formulas for the Total and Expense fields. To set formulas, tap on the  icon next to the field where you want a calculated value.

First I calculated Total, which is total miles traveled:

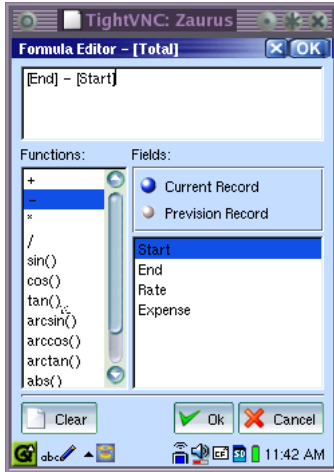
1. Tap on  icon to the right of the Total field.
2. Tap on Formula.

The Formula Editor screen is now displayed:




3. Tap on End in bottom right window.
4. Tap on – in bottom left window.

5. Tap on Start in bottom right window. The top window now displays the formula:

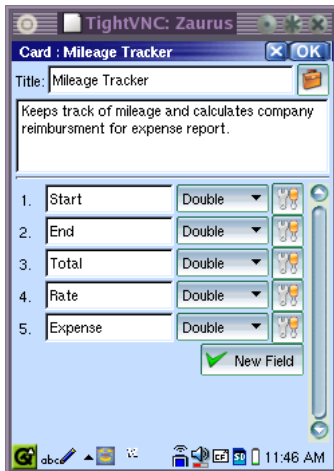


6. Tap OK to return to Card Editor screen.

Next, I'll calculate the expense, which is the Rate times Total (total miles traveled).

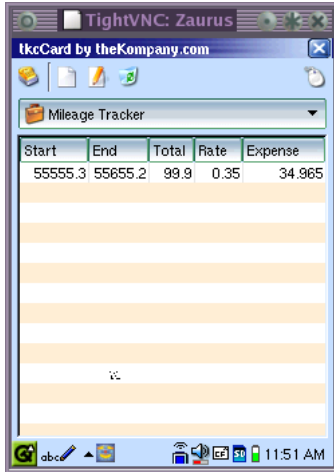
1. Tap  next to Expense field
2. Tap Formula
3. Tap Rate in bottom right window
4. Tap * in bottom left window
5. Tap Total in bottom right window
6. Tap OK.

I entered a description for the Mileage tracker:



Tap OK in upper right corner.

Tap OK again to go to Data view:



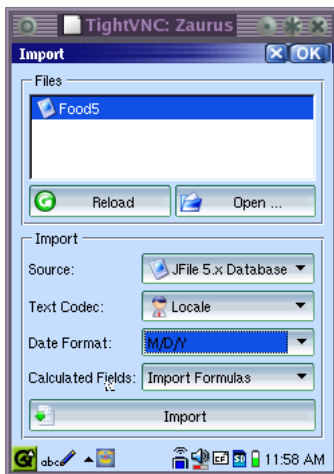
Other Formulas:

There are some pre-set formulas/functions available. The standard add, subtract, multiply and divide, and some more complex functions such as sin, cos, tan. To use them, just tap the function (such as sin), then tap the field you want to apply the function to.

New Import Format:

It is now possible to import Jfile 5.x Databases. The procedure is the same as for the MobileDB imports, described above.

Also new for Importing is the ability to set the Date Format and the ability to choose whether to import Formulas or Values:



Quick Edit for String data type:

If you tap on a String type field, you now have the ability to edit that field. A small window will pop up that allows you to edit the field:

