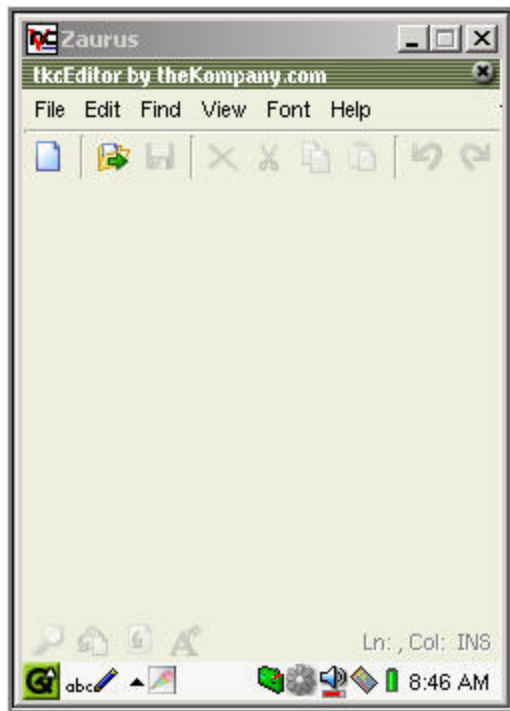


TkcEditor

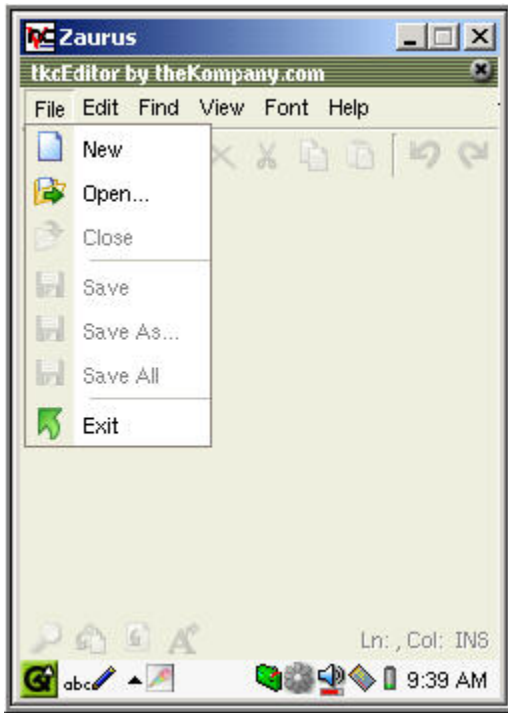
tkcEditor is more than just a simple Notepad application, it is a serious editor that provides many tools that are convenient for programmers as well.

When you first open tkcEditor, you will see a screen like this:

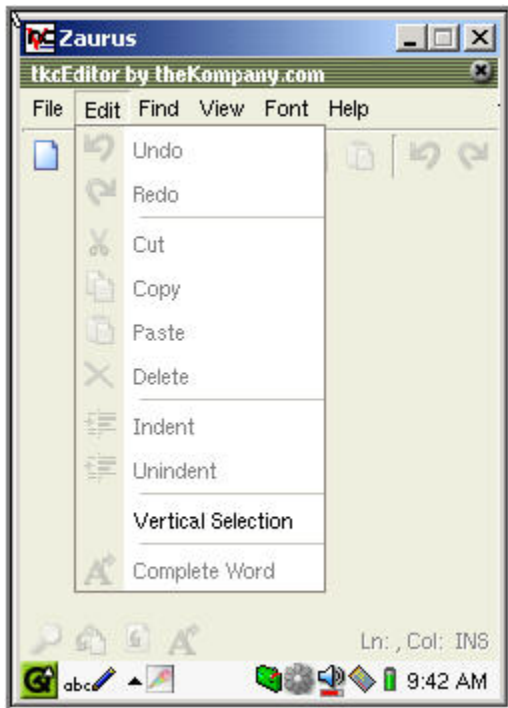


Menus (top bar):

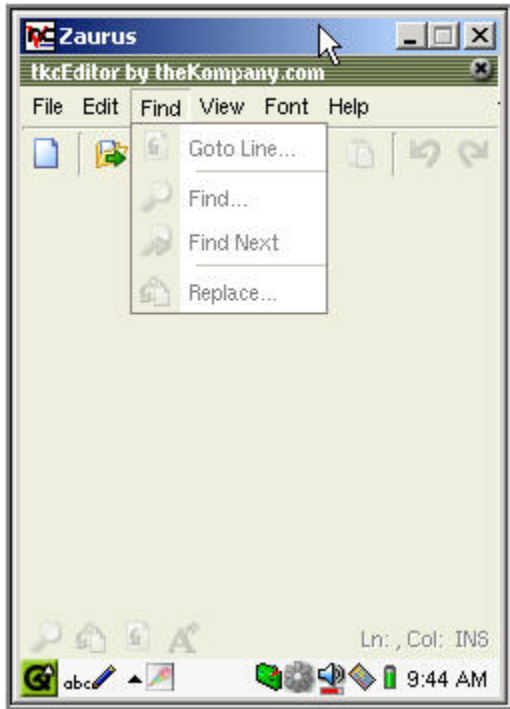
File Menu:



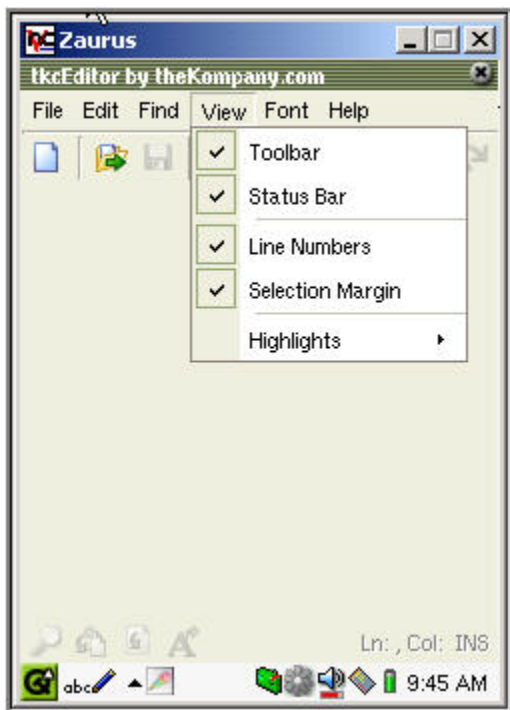
Edit Menu:



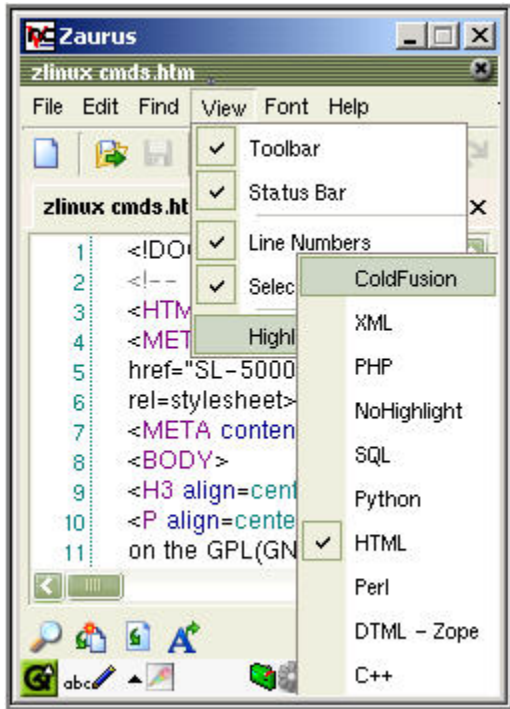
Find Menu:



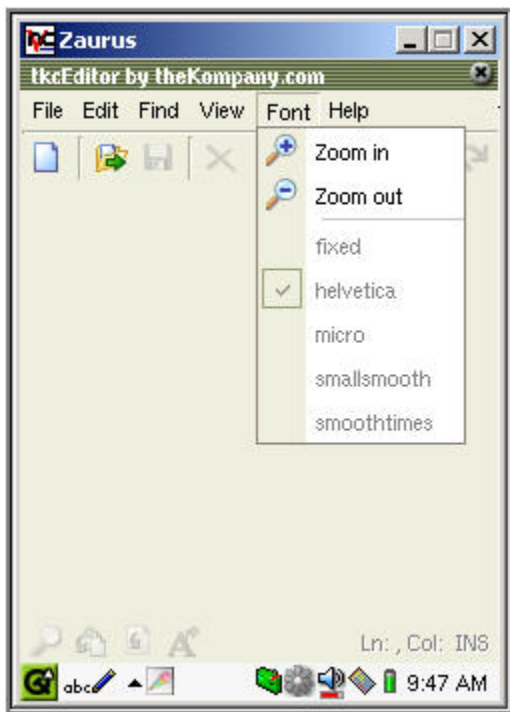
View Menu: If you uncheck these boxes, it will hide the unchecked items from view.



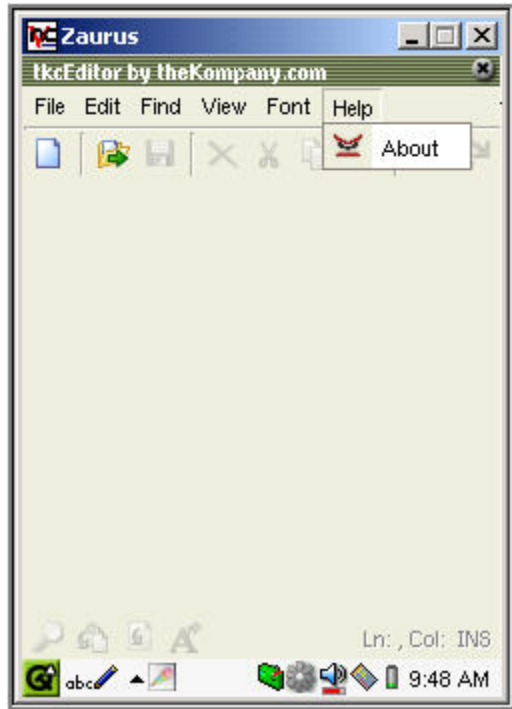
View/Highlights Menu:



Font Menu:



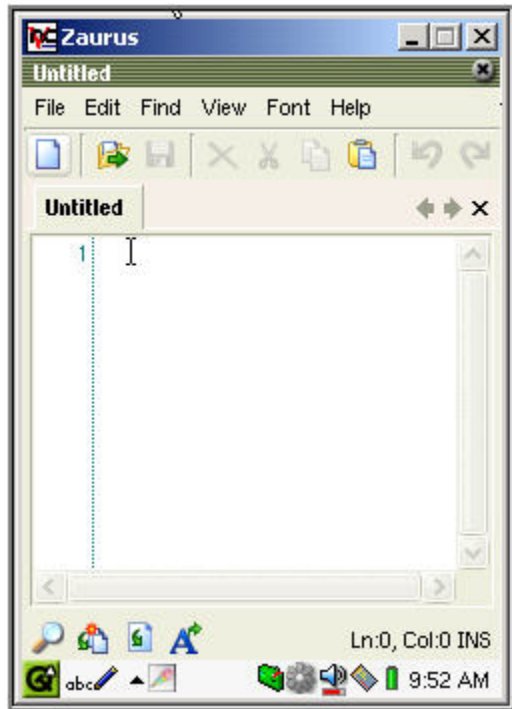
Help Menu:




Button Explanations:

Top Bar left to right:

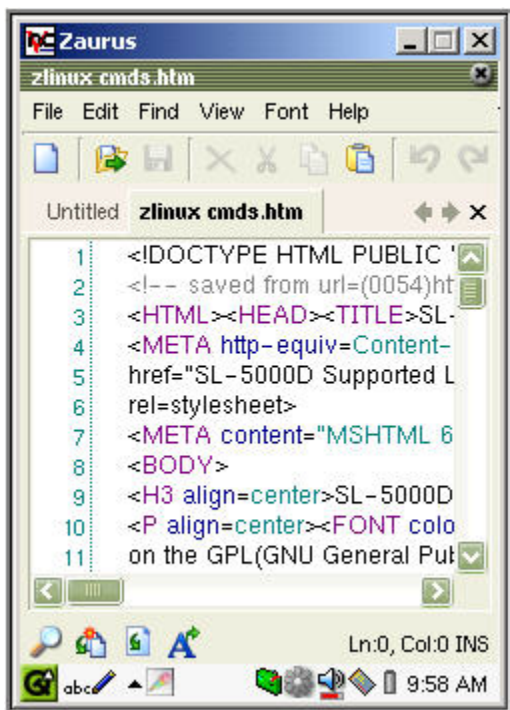
1.  New file. Brings up new text file:



2.  Open File: Brings up file tree. You can open another file in Editor:

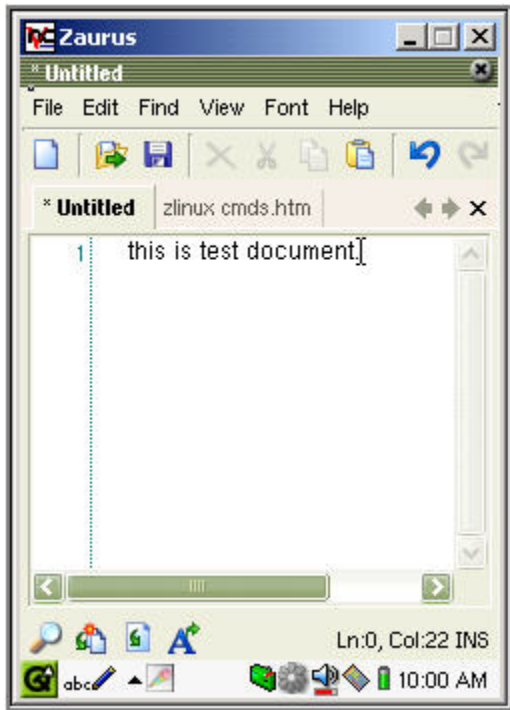


Select file you want to open, then tap OK in upper right corner. Now you have two document tabs, Untitled and zlinux_cmds.htm:



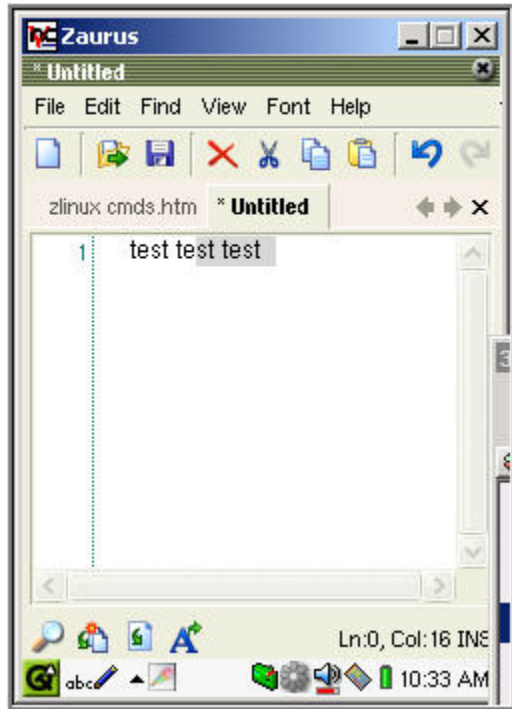
If you tap on the tab it takes you to that document.







Tap on “Untitled”, type your text in the window and a few more icons light up on the top bar:



3.  Save icon.




If you highlight some text in your document, more icons on the top bar will light up:




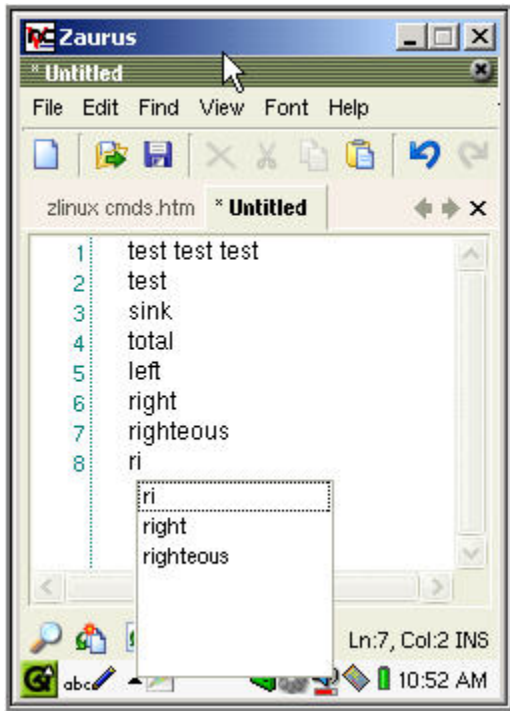
4.  Delete: Deletes selected text.
5.  Cut: Cut's selected text.
6.  Copy: Copies selected text to clipboard.
7.  Paste: Pastes text from clipboard into the document.
8.  Undo: Undo your last change to the document.
9.  Redo: Redo your last Undo.

Button Explanations:

Bottom bar left to right:

1.  Find: Find a word or string:
2.  Replace: Find a word/string and replace it with another.
3.  Go to Line: Takes you to the line you specify.

4.  Complete: Completes a word. (If the word is previously used in your document):



Zoom Out View of Document:



Just a note to Shawn/Max:

Could you put zoom in/zoom out icons on bottom bar?

Also..there is no word wrap or any way to control the amount of characters across the page. As it is, you have to hit enter to drop down to the next line. Not sure if there's anything that can be done, but maybe an option for an 8.5 inch wide page and an option for a Z-sized screen page with word wrapping based on page size?

(I'm not sure if that makes sense...but what I mean is, if you're making a document for a printing or for your pc, you could pick 8.5 x 11, but if you're making a document for always viewing on z or handheld, you would pick the small size and then have word wrapping based on the size page you pick? Would that be possible? ...its just a thought/suggestion.)