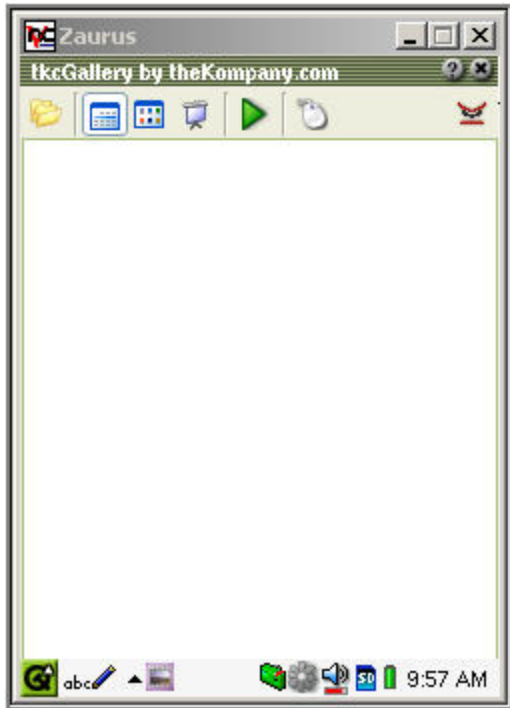



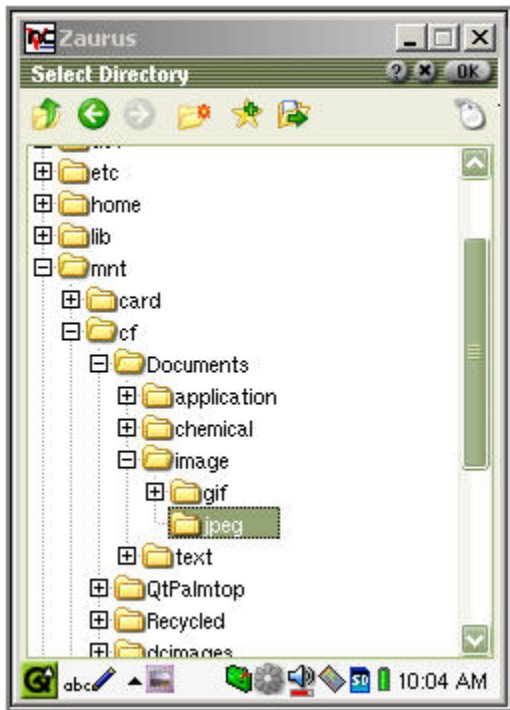
tkcGallery


tkcGallery is meant to simplify working with digital images, specifically Compact Flash abased Digital Cameras. With tkcGallery you can simply pop in the CF card (or SD card) from your digital camera and then browse, delete, rotate, select for slide show and play back your images. The Zaurus screen provides a quick and convenient way to better show off pictures while you're on the go.

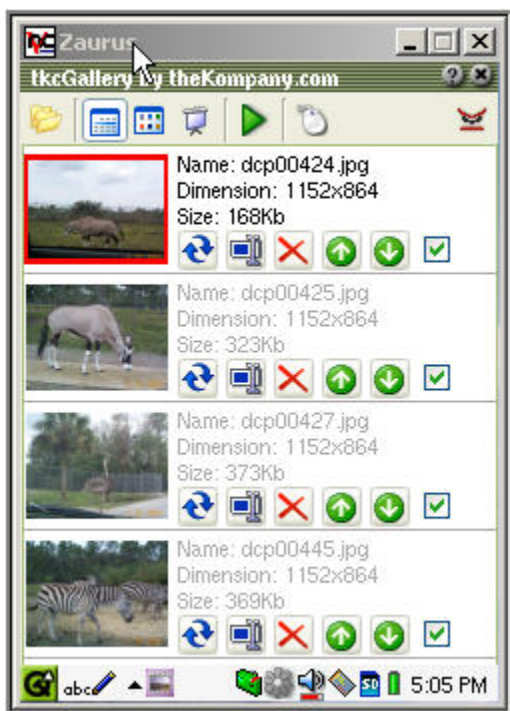
When you first open tkcGallery, you will see this:



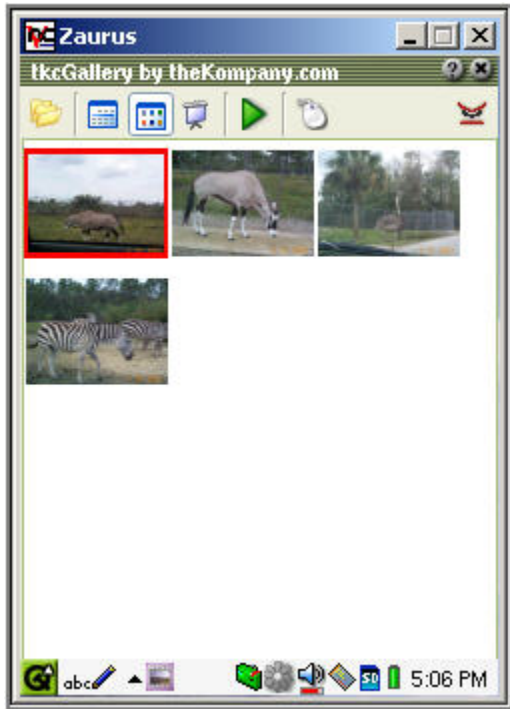
To view your pictures directly from your CF or SD card, click on the  (show dir. tree icon) and navigate to My PDA/mnt/cf/Documents/image/jpeg (or whatever the path to your pictures is):



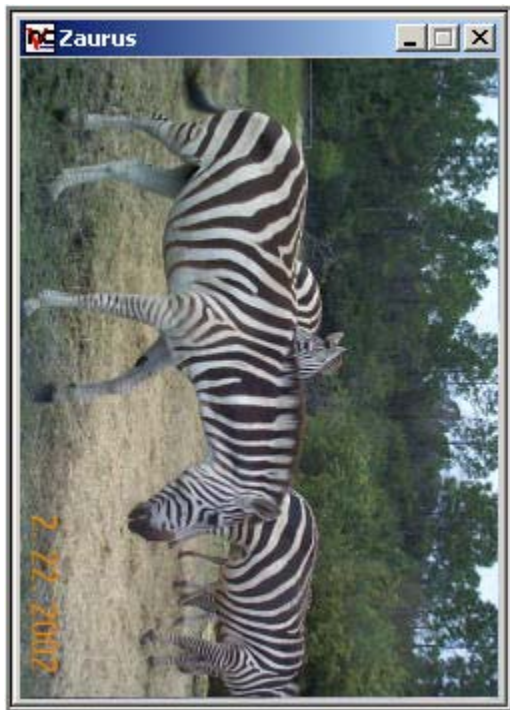
Click OK in the upper right corner. TkCGallery will then show the pictures it has located in the **View Details mode** :



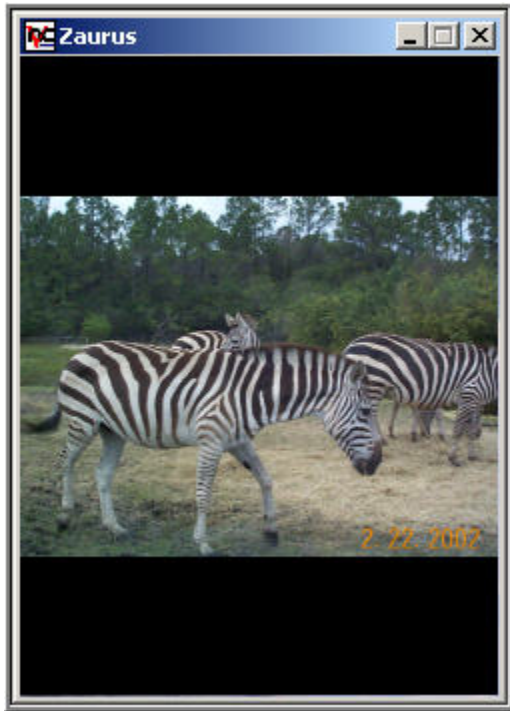
View List mode:



Full Screen Mode:








Full Screen (Rotated Picture):










Button Explanations:

Next to each picture you will see information about the picture and some icons:

1.  Rotate: This will rotate your photo in 90 degree increments.
2.  Rename: This pops up a little box and allows you to rename your picture.
3.  Delete: This allows you to delete your picture.
4.  Up Arrow: Change image position in slide show.
5.  Down Arrow: Change image position in slide show
6. Check box: Include/exclude image in slide show

Menu Bar Explanation:

Top bar, right to left:

1.  Show Directory Tree: Use this to find the directory of the pictures you want to view.
2.  View Details: This takes you to a thumbnail view that lists the details/properties of a picture.
3.  View List: Allows you to view Thumbnails off the pictures with no details.
4.  Full screen: Allows you to view selected picture full screen
5.  Play: Plays a slideshow of your pictures.
6.  Mouse: Options. Allows you to choose some sorting options and reload your picture directory.
7.  tkcKompany icon: Shows the tkcGallery splash screen

Keyboard in Full Screen Mode: While in full screen mode, you can use the keyboard / jog/type dial for the following:

Jog-type Dial on bottom of Zaurus:	Key_Up:	Rotate -90 degrees
	Key_Down:	Rotate +90 degrees
Zaurus Keyboard:	Key_Left:	Previous Picture
	Key_Right	Next Picture
	Space	Return to List View mode

New Zoom Feature:

Key_Enter (OK) - enter into zoom mode (1:1)

Once in zoom Mode:

Key_Enter (OK) - switch scale factor (1:1->1:2->1:4->1:8->1:1->)

Key_Left, Key_Right, Key_Up, Key_Down (on Jog-type Dial on bottom of Zaurus) - select zoom region

Key_Escape(Cancel) - exit from zoom mode

